

OVEN WITH FIXED COOKING SURFACE

**MODEL:
VENEZIA L-M4P-EL**

POSITIONS			
GAS	<input type="checkbox"/>	<input type="checkbox"/>	<input type="checkbox"/>
	SX	CEN	DX
WOOD	<input type="checkbox"/>	<input type="checkbox"/>	<input checked="" type="checkbox"/>

The " Forni Dorigo " are designed to cook with wood to give maximum efficiency and flavor by adding the appearance theatrical with the addition of an electrical resistance infrared that reaches the temperature from 10 ° c to 220 ° c in 13 minutes .! The infrared heating element located under the stove has a total power of 5.5 kW, if used in 100% or 2.5kw, if used in 50%. Provides immediate recovery of the heat losses of the cooking surface in a few minutes and is governed in a manual or automatic through the 2nd temperature probe.

The "DORIGO OVENS" models L-MP4-EL-are available in 4 versions. The ovens are delivered already assembled with the possibility of disassembly to cross each wide door more than 70 cm. and can be moved with the cart, and in the case of removal can be dismantled and relocated to new premises. We recommend this solution for the installation of 4 pieces in less than 3 hours by unskilled personnel using suitable lifting equipment recommended by us.

The "DORIGO OVENS" model LG-MP4-EL are supplied assembled and disassembled in 4 pieces:

- 1) metal tank with insulation and stove in one piece support structure robust;
- 2) monolithic dome built in vibrated super high alumina refractory concrete that is positioned externally to the floor and
- 3) front arc with fitting built-in smoke,
- 4) 20cm thick ceramic fiber insulation, copper colored metal top cover ashlar

The curvature of the monolithic dome has a spherical shape that provides maximum aerodynamic and combustion of wood or gas and is sheltered by a sturdy metal frame with a thickness of 4mm.

The height from the floor to the roof 'of 44 cm and with the right relationship with the case of smoke leakage delivers significant energy savings and a huge thermal resistance. In the model "Rome" the height is of 48cm.

The cooking surface is in one piece with a thickness of 80mm and have a size from 100-115-145-165 cm in diameter. The density of vibrated refractory material of the stone surface and the domes guarantees an enormous build up of heat resulting in energy savings.

The deep sill is closed by the walls and ensures lower heat from escaping into the workspace of pizza and lower fuel consumption. The width and '58 cm. the sill is covered and protected by a stainless steel plate bent. The front arc has a thickness of 10 cm and is' 80cm wide and 45cm high.

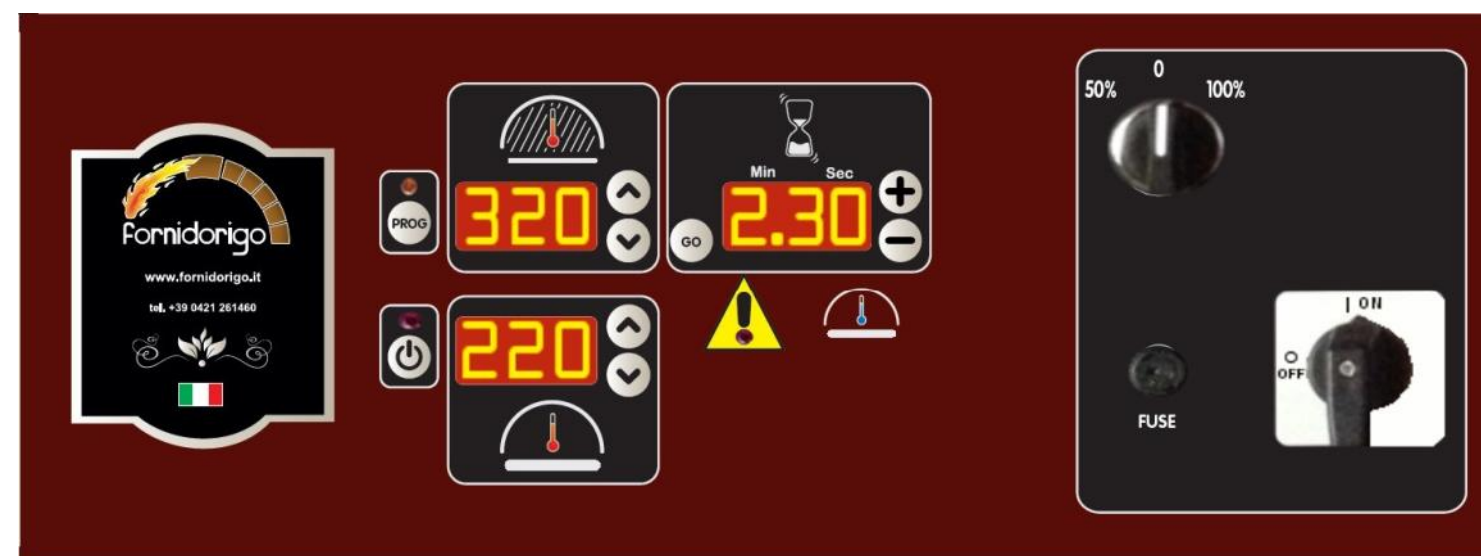
The flue gas connection has a width of 197mm.

10 year warranty

The " Forni Dorigo " L-M4P-EL models are designed for the installation of our special gas burner that guarantees the highest yields at the lowest cost in the world market

L-M4P-EL	EXTERNAL DIMENSION CM	NR PIZZAS Ø cm		
		25	30	38
NAPOLI L M4P-EL	135 Width x 148 Depth	8	6	3
MILANO L-M4P-EL	150 Width x 160 Depth	10	9	4
VENEZIA L-M4P-EL	180 Width x 190 Depth	16	12	6
ROMA L-M4P-EL	200 Width x 216 Depth	21	15	9

00



SEE
PAGE
CONTROLS

LEGEND L_P4_EL

Metallic coating
copper color ashlar

Front arc with fitting
built-in smoke

Insulation top
ceramic fiber

Control
panel

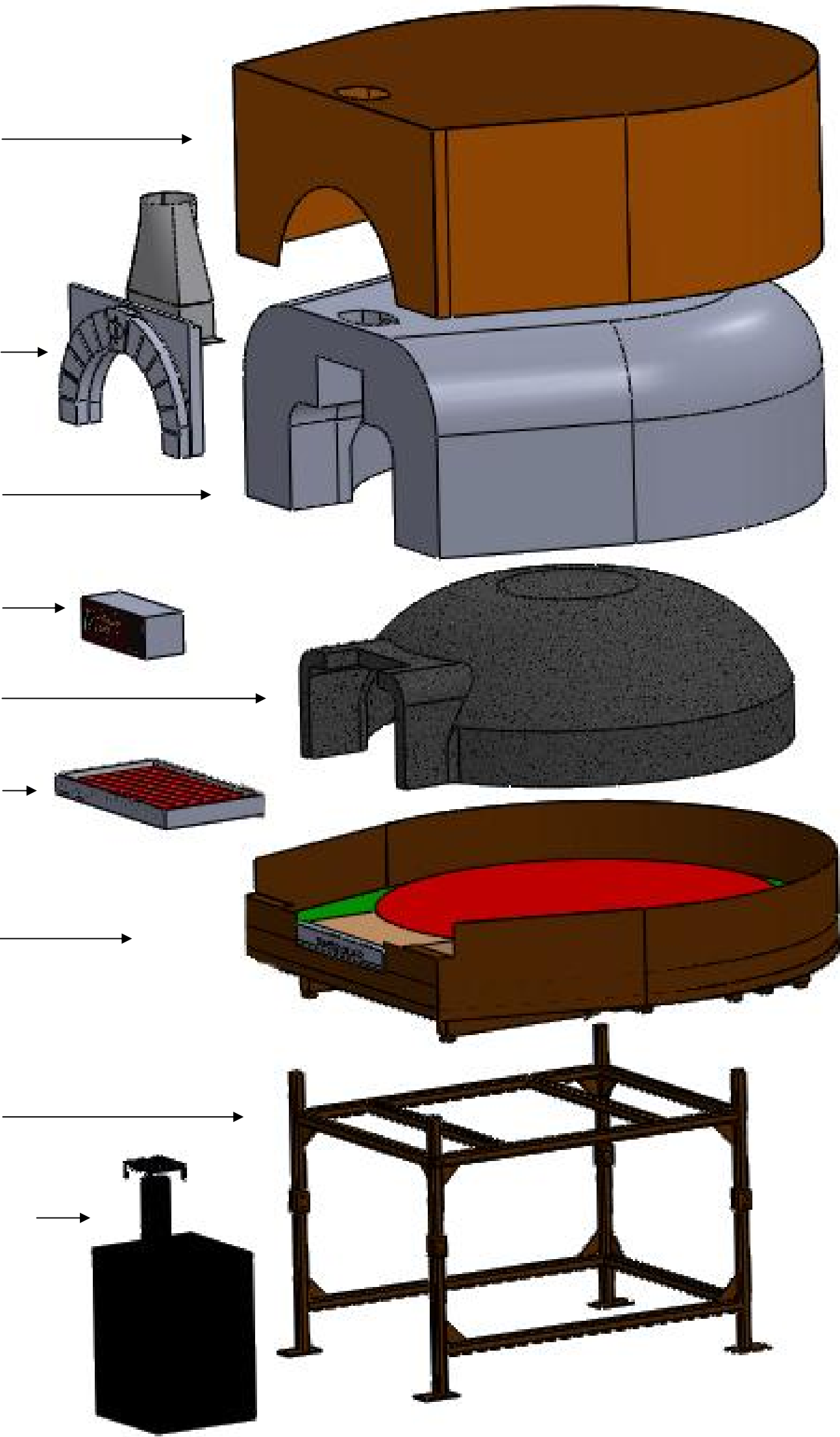
Monolithic Dome
refractory concrete

Infrared Electric
Resistance

Metal tank containing
insulation, stove and window sill

Metal support
support oven

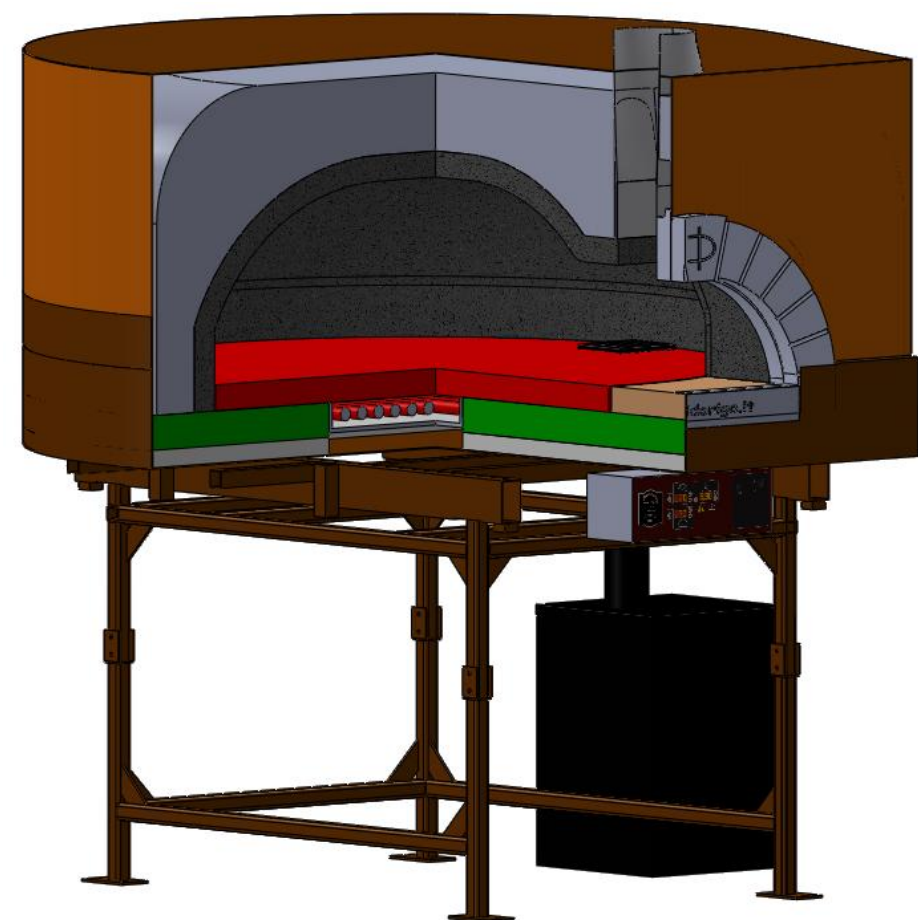
Deposit ash bin
OPTIONAL



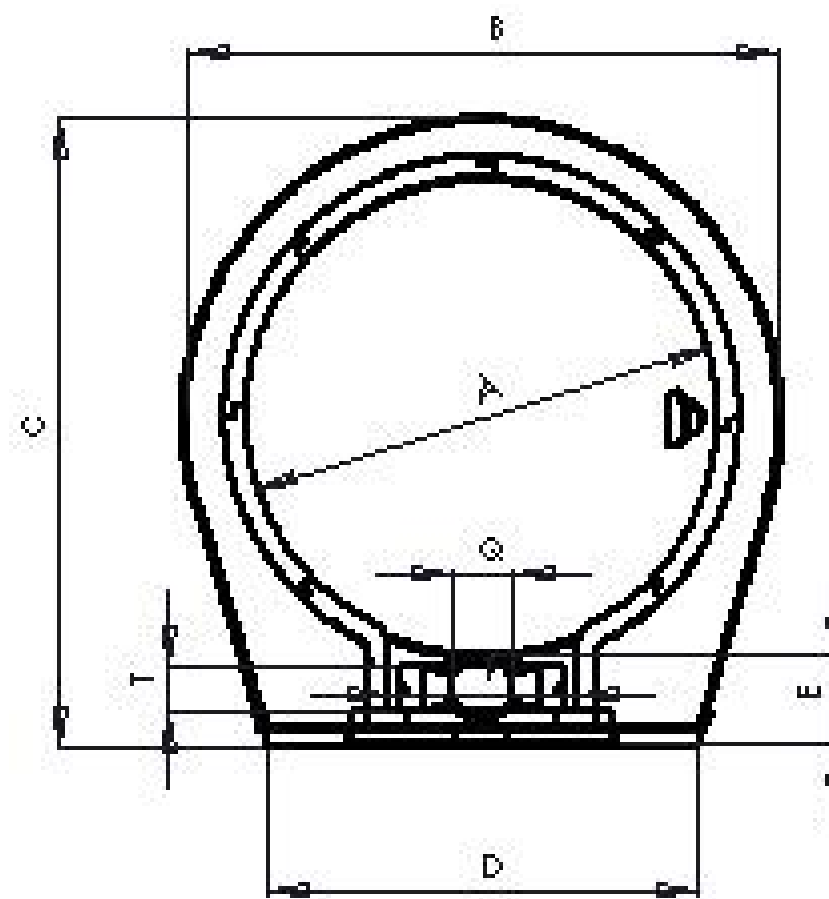
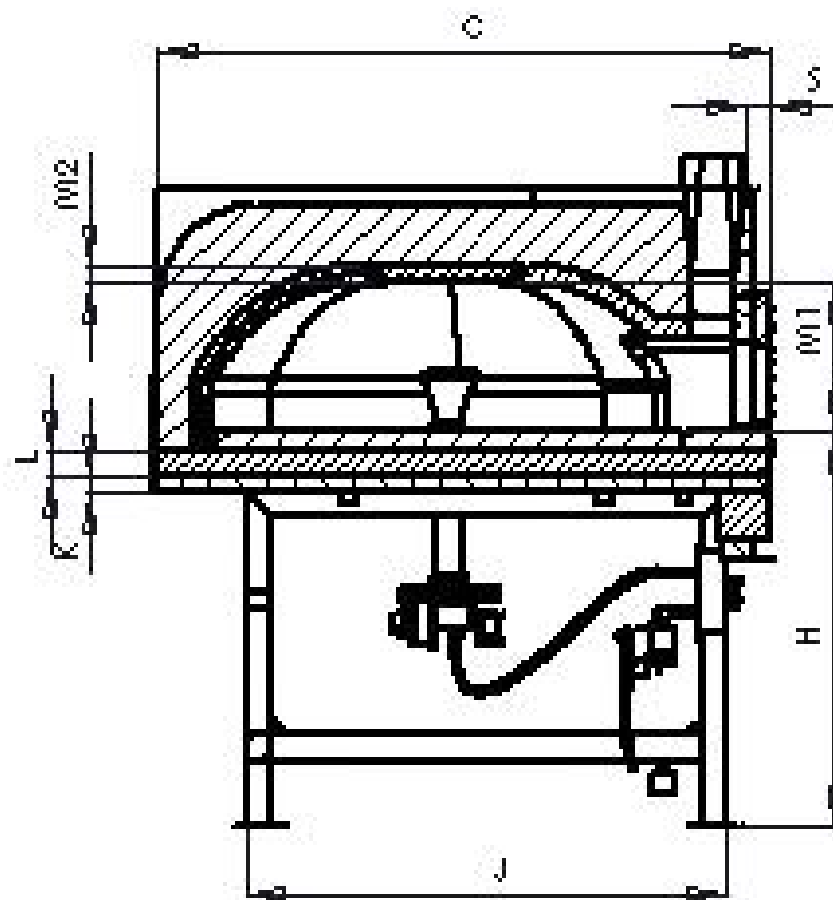
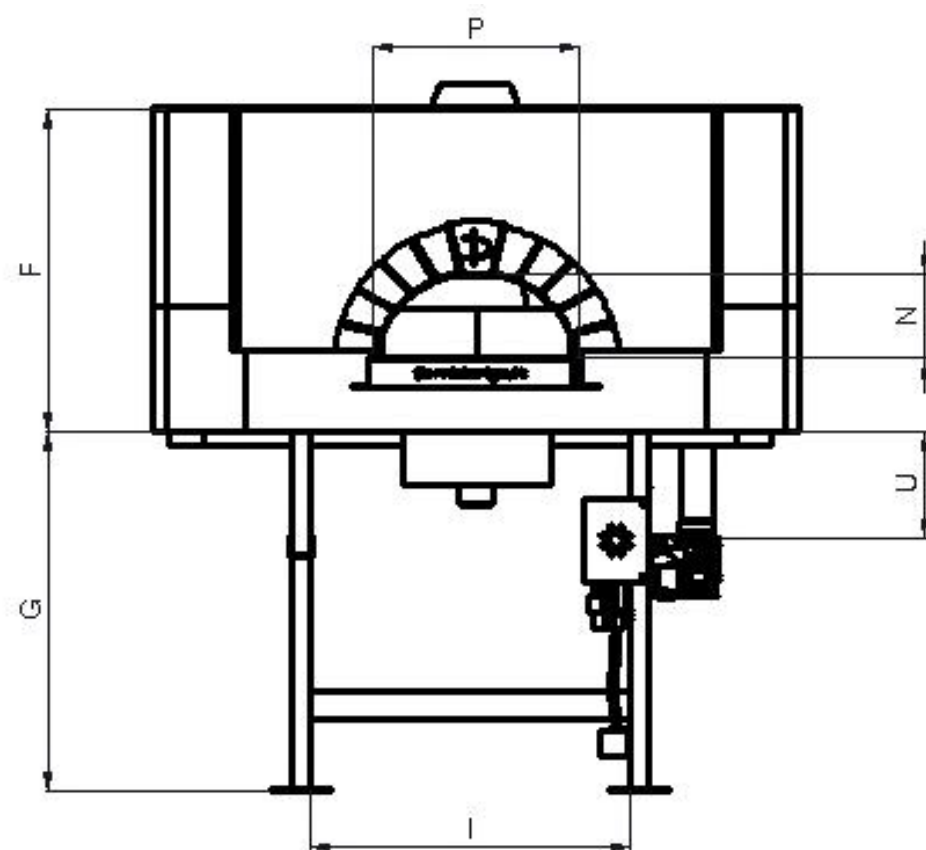
MODELS	POWER MAX
GENOVA	18 KW
NAPOLI	21 KW
MILANO	24 KW
VENEZIA	28 KW
ROMA	32 KW

**ELECTRIC UTILITIES
REQUIREMENTS**
220-240 VAC
5500 WATT
22 AMP
50-60 HZ

ACCESSORIES
PIZZA PADDLE TO SLIP IN
PIZZA PADDLE TO TURN AND SLIP OUT
BRUSH IN
LASER THERMOMETER
STORAGE WOOD BOX ON WHEELS
DEPOSIT ASH BIN
GRANITE SHELF
LOWER METALLIC COVER
MOSAIC FACADE



L-M4P-EL		NAPOLI	MILANO	VENEZIA	ROMA
A	SIZE AND THICKNESS HOB	100x8	115x8	145x8	165x8
B	EXTERNAL WIDTH	135	150	180	200
C	DEPTH EXTERNAL	148	160	190	216
D	EXTERNAL WIDTH FRONT	130	130	130	130
E	DEPTH SILL M4P	24	30	28	34
F	STANDING HEIGHT FROM ABOVE	98	98	98	98
G	GROUND CLEARANCE A BASIC FRAME	100	100	100	100
H	HEIGHT OF WORK	120	120	120	120
I	INSIDE WIDTH PEDESTAL	75 R	64	90	99
J	DEPTH PEDESTAL	110 R	140	149	169
K	BASIC INSULATION LOWER 1	4	4	4	4
L	BASIC INSULATION LOWER 2	8	8	8	8
M1	INDOOR DOME HEIGHT	50	44	44	48
M2	THICKNESS DOME M4P	4-8	5-9	6-10	6-10
M3	SPESSORE CORNICIONE M4P	X	7,8	8	10
M4	HEIGHT FRAME M4P	X	17	22	20
N	MOUTH HEIGHT FIRED	28	28	28	28
P1	WIDE MOUTH FIRED	58	58	58	58
P2	WIDTH WIDE MOUTH	80	80	100	100
Q	DIAMETER FLUE	19.5	19.5	19.5	19.5
S	REMOTE CONNECTION SMOKE	15	15	15	19
T	DISTANCE WITH FIREPLACE FITTING	28	23	18	23
U	HEIGHT BURNER RIGHT / LEFT IN TANK	30	30	30	30
	HEIGHT UNDER TANK BURNER C	38	38	38	38
	TOTAL WEIGHT OF THE OVEN M4P	1430	1830	2130	2430



CONTROL PANEL MODEL: G-EL + LG-EL

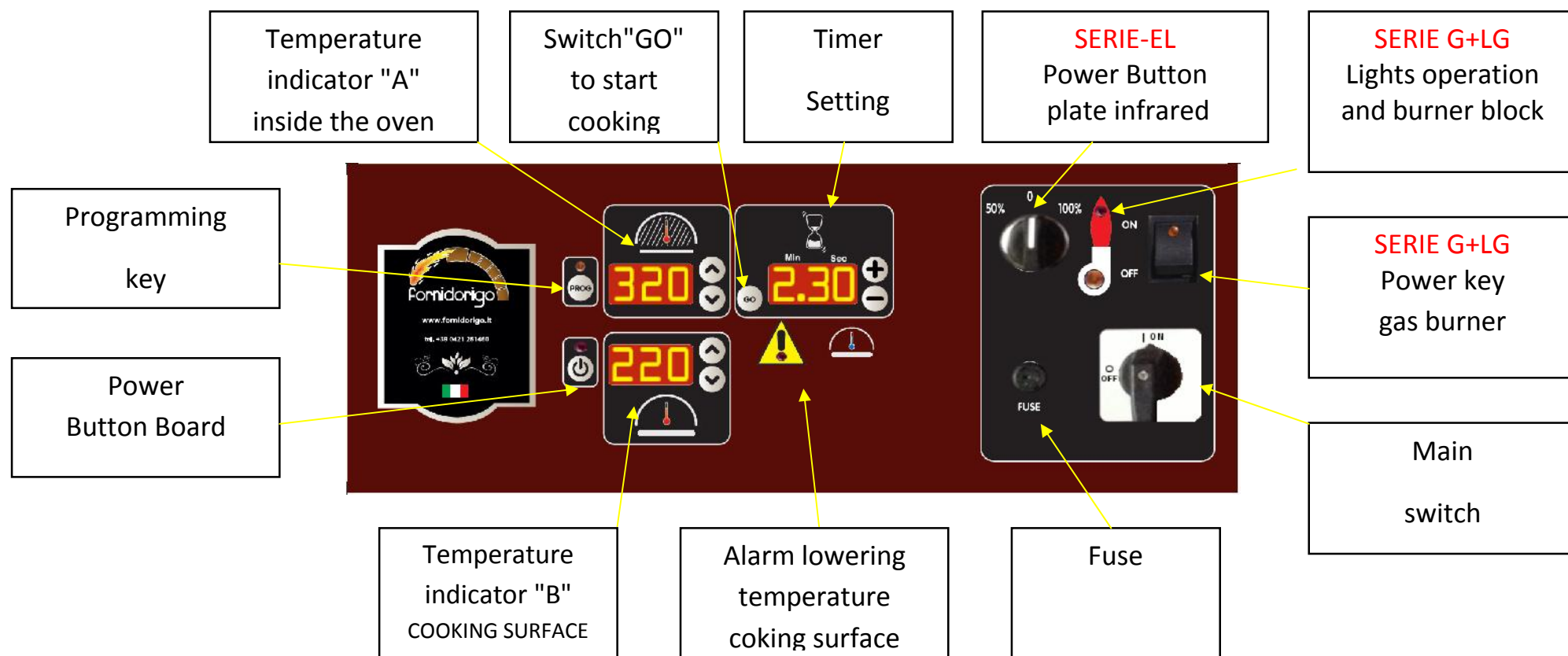
The control commands and 'consists of:

1) the temperature inside the oven (A), 2) the temperature of the stone surface (B), 3) the warning light ⚠ in the case of lowering the temperature of the stove, and 4) pre-set cooking timer, 5) notice cooling stone clay surface with automatic ignition of the electric heater infrared, warms up to 200 ° C in 13'; 6) 3-position switch for selection consumption electrical resistance 0%, 50% and 100%; 7) light switch "ON / OFF" for the 'automatic ignition of the gas burner 8) lamps and lamp signaling operation of the burner block; 9) switch for power generally; 10) Fuse.

The probe "A" is set to automatically turn off the burner to achieve excessive heating.

The probe "B" is set for the automatic switching of the electrical resistance infrared for the recovery of the temperature of the stone clay surface. When the probe detects the excessive cooling of the stove turns on the indicator light ⚠ and an audible beep for 5 seconds.

This function notifies the excessive cooling of the stone clay surface and alerts to take action as soon as possible to recover the lost temperature for cooking other pizzas.




CONTROL PANEL MODEL-G-EL TANGO TANGO +-LG-EL

The control panel and 'consists of:

1) the electronic "Dorigo" with temperature display 2, one inside the oven and the other in the baking dish, 2) audible end of cooking with slow speed automatic rotation, 3) rotation of the stone clay surface controlled by inverter system with programmable 4) potentiometer to adjust the speed of batch; 5) notice of floor cooling with automatic ignition of the electric resistance infrared heats the floor at 200 ° C in 13; 6) 3-position switch for selection consumption electrical resistance 0%, 50% and 100%; 7) switch for the selection of the round plate clockwise and counterclockwise; 8) emergency button and power button electronic control unit 9) switch for power gas burner with ignition and light signaling block.

The probe "A" is set to automatically turn off the burner to achieve excessive heating.

The probe "B" is set for the automatic switching of the electrical resistance infrared for the recovery of the temperature of the stone clay surface

When the probe detects the excessive cooling of the stove turns on the indicator light  and an audible beep for 5 seconds. This function notifies the excessive cooling of the stone clay surface and alerts to take action as soon as possible to recover the lost temperature for cooking other pizzas .

Programming
key

Temperature
indicator "A"
inside the oven

Switch
"GO"
to start cooking

Timer
Setting

Power
Button
Board

Alarm
lowering
temperature

Main
switch

Temperature
indicator "B"
stone surface"

Fuse

General
Emergency
Button

Selector
direction
stone surface

Power Button
plate infrared

SERIE G-EL+LG-EL
Power key
gas burner

SERIE G-EL+LG-EL
Lights operation
and burner block

Variable speed
stone surface

